

Item No.	6f Supp
Date of Meeting	July 24, 2018

City of Des Moines ILA

S. 216th Street Frontage Improvements

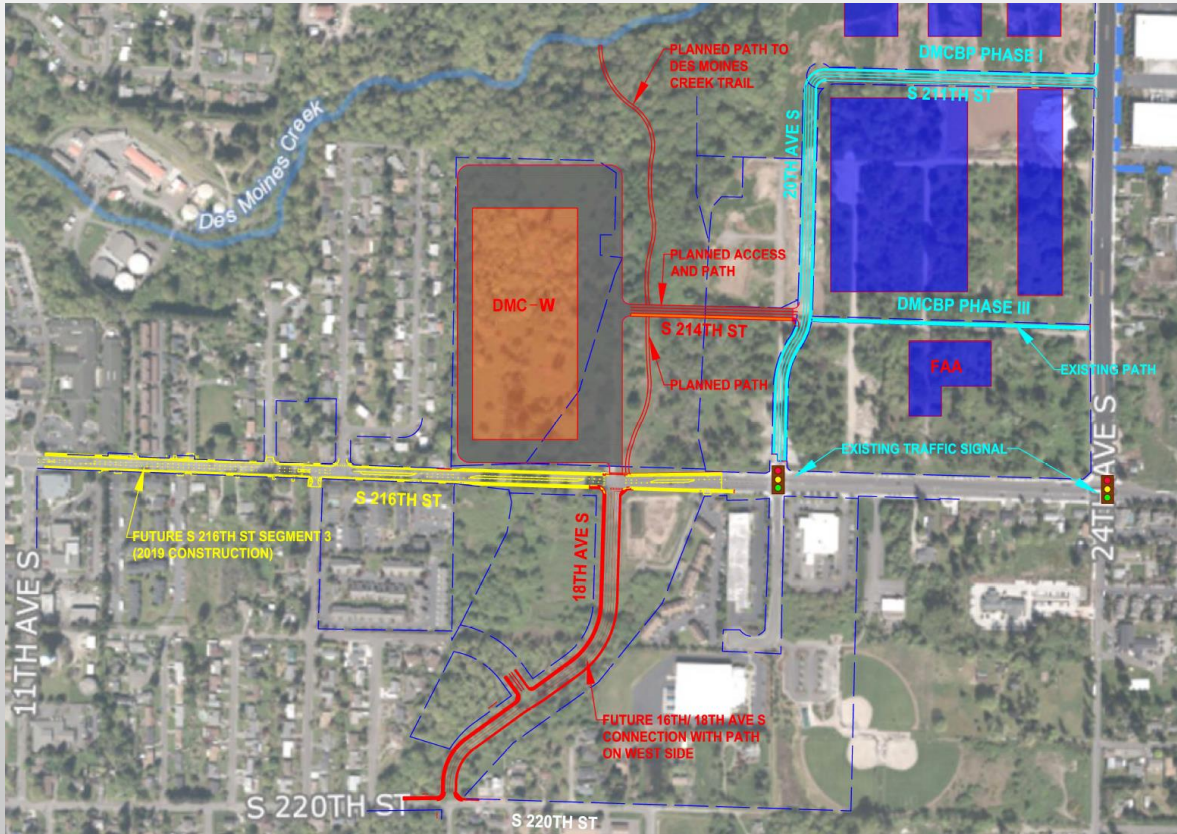
July 24, 2018





- Frontage improvements will allow for better access to future development at DMC-W
- Port will contribute \$1.5M towards frontage improvements adjacent to DMC-W and target WSDOT property.

ILA and frontage improvements will facilitate future development of DMC-W



- City of Des Moines is progressing with the Transportation Gateway Project along S. 216th Street.
- Port contribution based on ILA will allow for more streamlined development of the DMC-W site in the future.

ILA continues cooperation between the Port and City of Des Moines